



The Evolution of Exceptions

SCG Seminar – Jakob Schaerer

Exceptions

```
FileReader fr = new FileReader("foo.in");
```

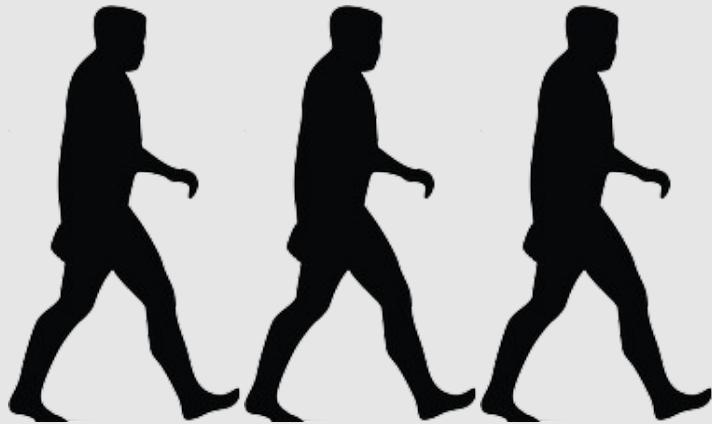
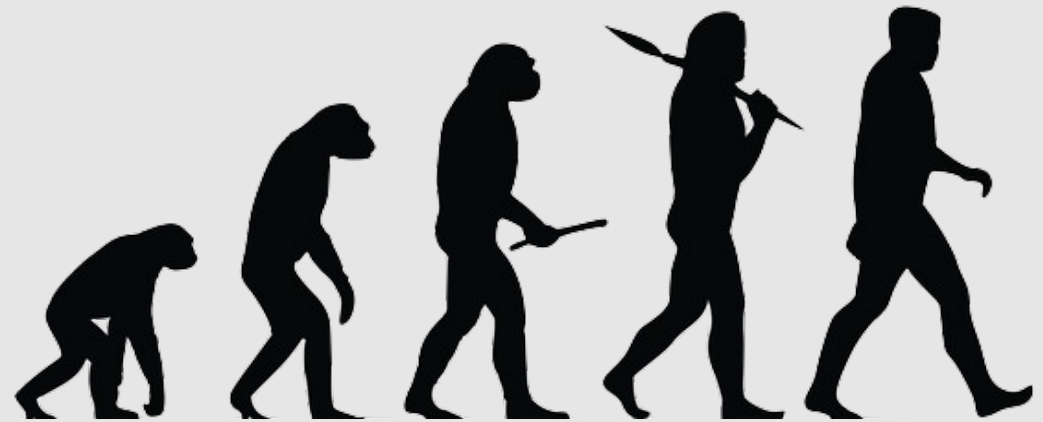
Exceptions

```
FileReader fr = new FileReader("foo.in");
```

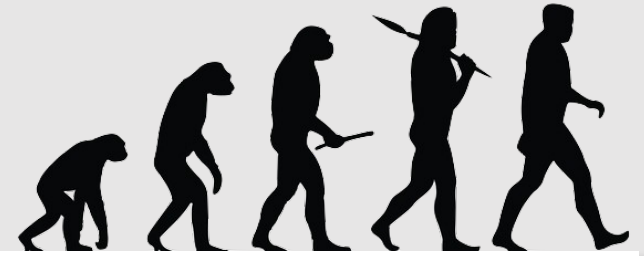
Exceptions

```
FileReader fr;  
try {  
    fr = new FileReader("foo.in");  
} catch (FileNotFoundException e) {  
    // TODO Auto-generated catch block  
    e.printStackTrace();  
}
```

Evolution of Exceptions



Evolution of Exceptions



As a project evolves:

- Do developers introduce more user-defined exceptions?
- Do developers catch more specific exceptions?
- Do developers change the exception handling (catch block)?

Are the answers to these questions the same for different projects?

Objects of Interest

Exception Class

```
public class PresentationException extends Exception {  
  
}
```

Objects of Interest

Try-Catch Block

```
try {  
  
} catch (Exception e) {  
  
}
```

Objects of Interest

Throw Statement

```
throw new Exception();
```

Objects of Interest

Throws declaration

```
public void sample() throws IOException {  
  
}
```

Dataset

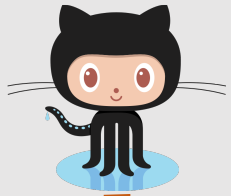
Java Projects from github:



elastic

Solr

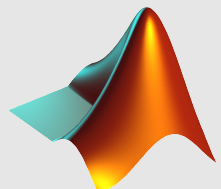
and counting ...



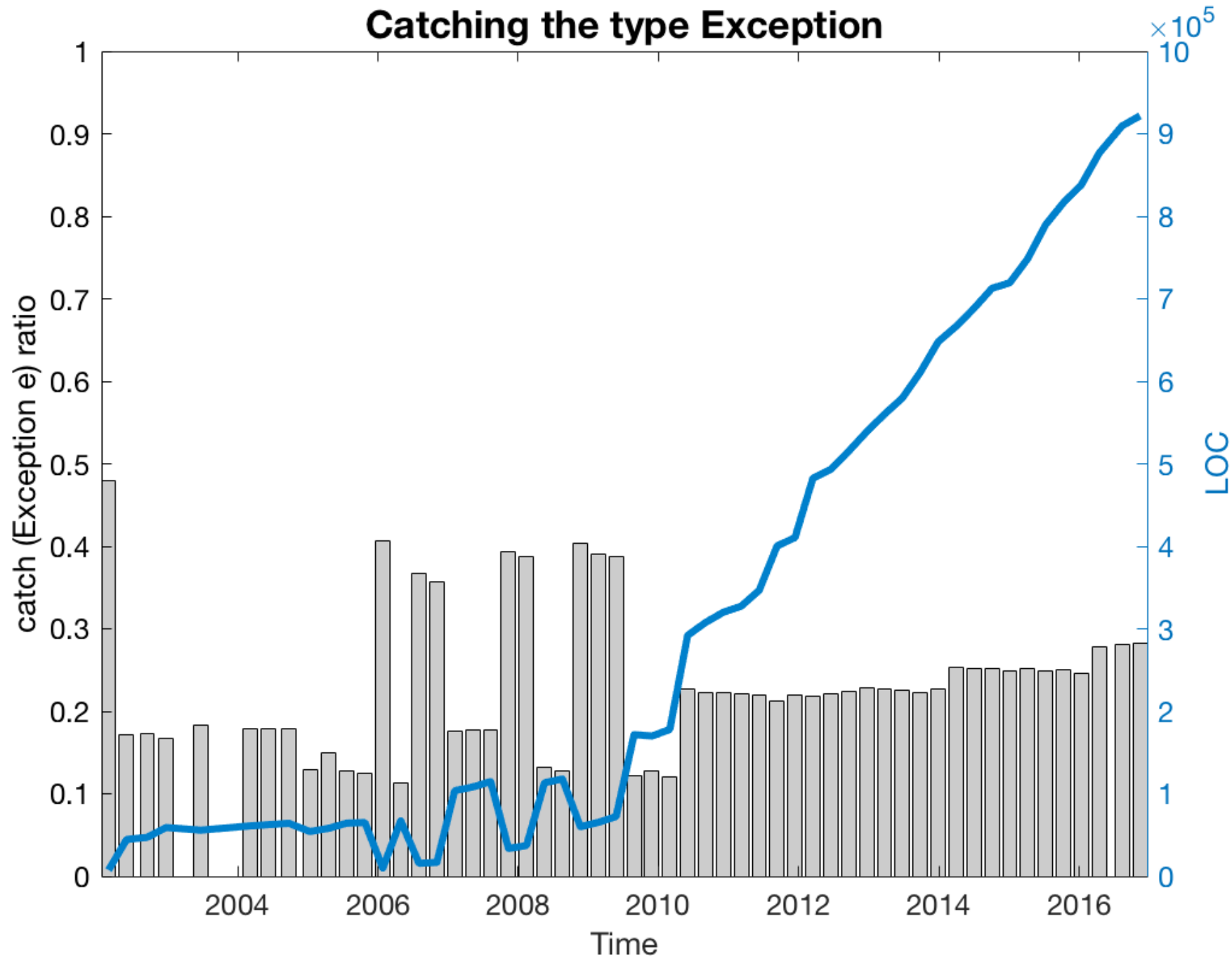
Overview



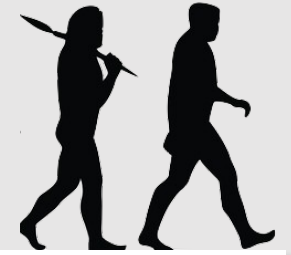
JavaParser
CLOC



Catching the type Exception

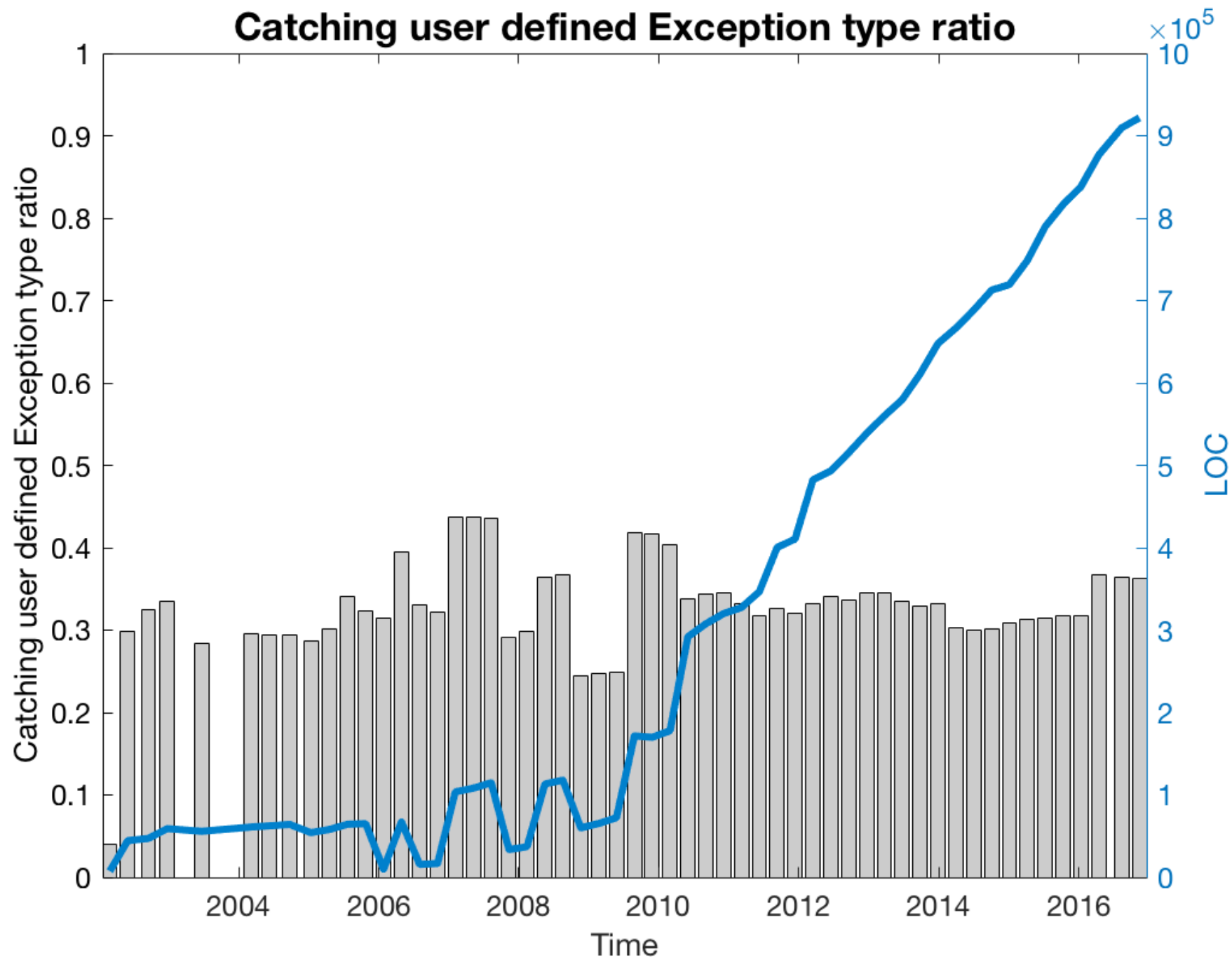


Outlook

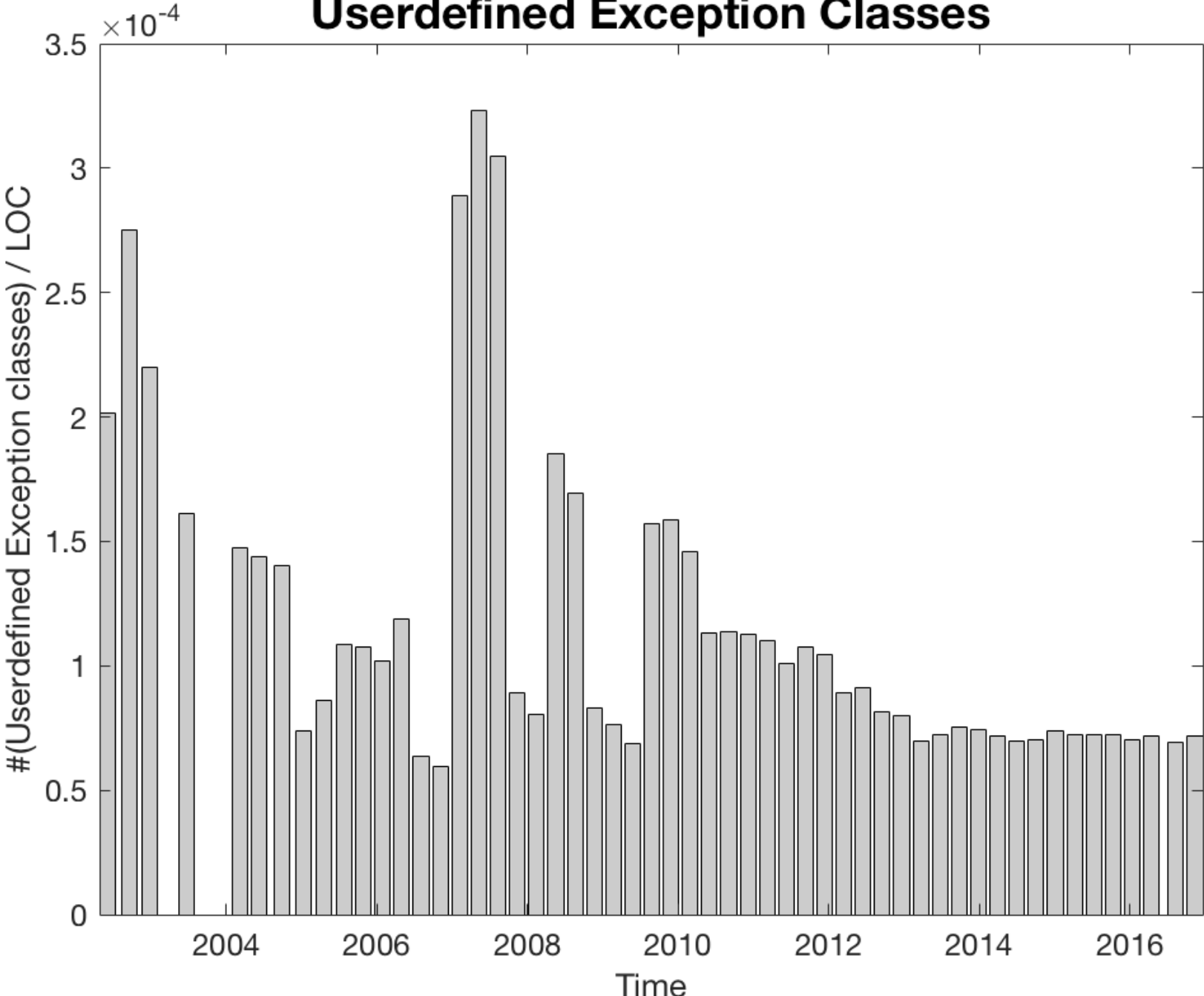


- Crunch the numbers
- Parse more projects

Questions?



Userdefined Exception Classes



Mu: number of methods that throw user-defined exceptions only

Md: the methods that throw java default exceptions only

Mb: number of the methods that throw both

Ru: The number of “throw” blocks that throw user-defined exceptions

Rd: The number of “throw” blocks that throw java default exceptions

Tu: The number of user-defined exceptions in “throws” blocks

Td: The number of java default exceptions in “throws” blocks

Cu: The number of user-defined exceptions in “catch” blocks

Cd: The number of java default exceptions in “catch” blocks

Uc: The number of user-defined checked exceptions

Uu: The number of user-defined unchecked exceptions

LOC: the number of lines of code