

Polymorphism in the Spotlight: Studying Its prevalence in Java and Smalltalk

Nevena Milojković, Andrea Caracciolo, Mircea Lungu,
Oscar Nierstrasz

{nevena, caracciolo, lungu, oscar}@aim.unibe.ch

David Röthliesberger, Romain Robbes
davidroe@mail.udp.cl, rrobbes@dcc.chile.cl

```
public abstract class CompositeFigure
    extends AbstractFigure
    implements FigureChangeListener {
...
private void _addToQuadTree(Figure f) {
    if (_theQuadTree != null) {
        // Bugfix: Make sure the rectangle
        // is not zero width or height.
        Rectangle r = f.displayBox();
        ...
    }
}
...
}
```

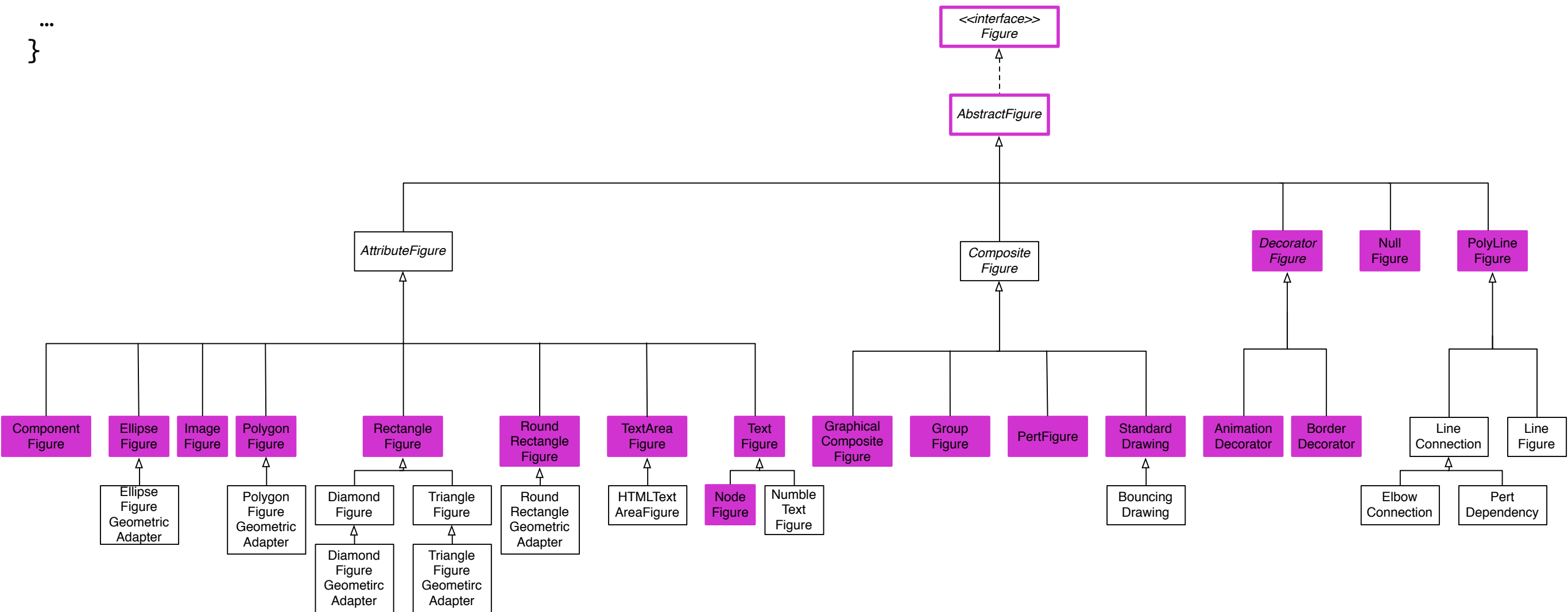


```
public abstract class CompositeFigure
    extends AbstractFigure
    implements FigureChangeListener {
...
private void _addToQuadTree(Figure f) {
    if (_theQuadTree != null) {
        // Bugfix: Make sure the rectangle
        // is not zero width or height.
        Rectangle r = f.displayBox();
        ...
    }
}
...
}
```

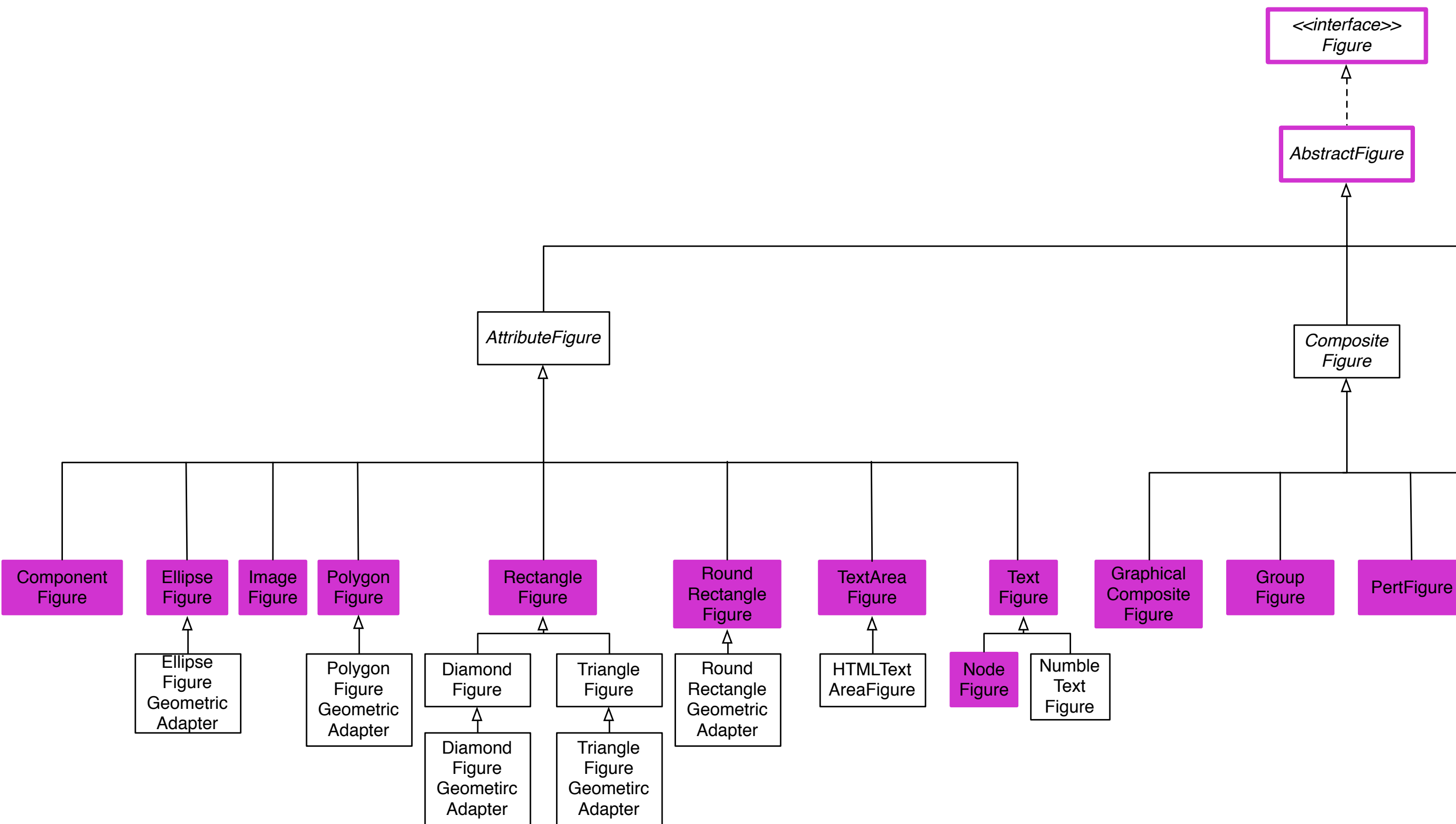
```
public interface Figure
    extends Storable, Cloneable, Serializable {
...
public Rectangle displayBox();
...
}
```

```
public abstract class CompositeFigure
    extends AbstractFigure
    implements FigureChangeListener {
```

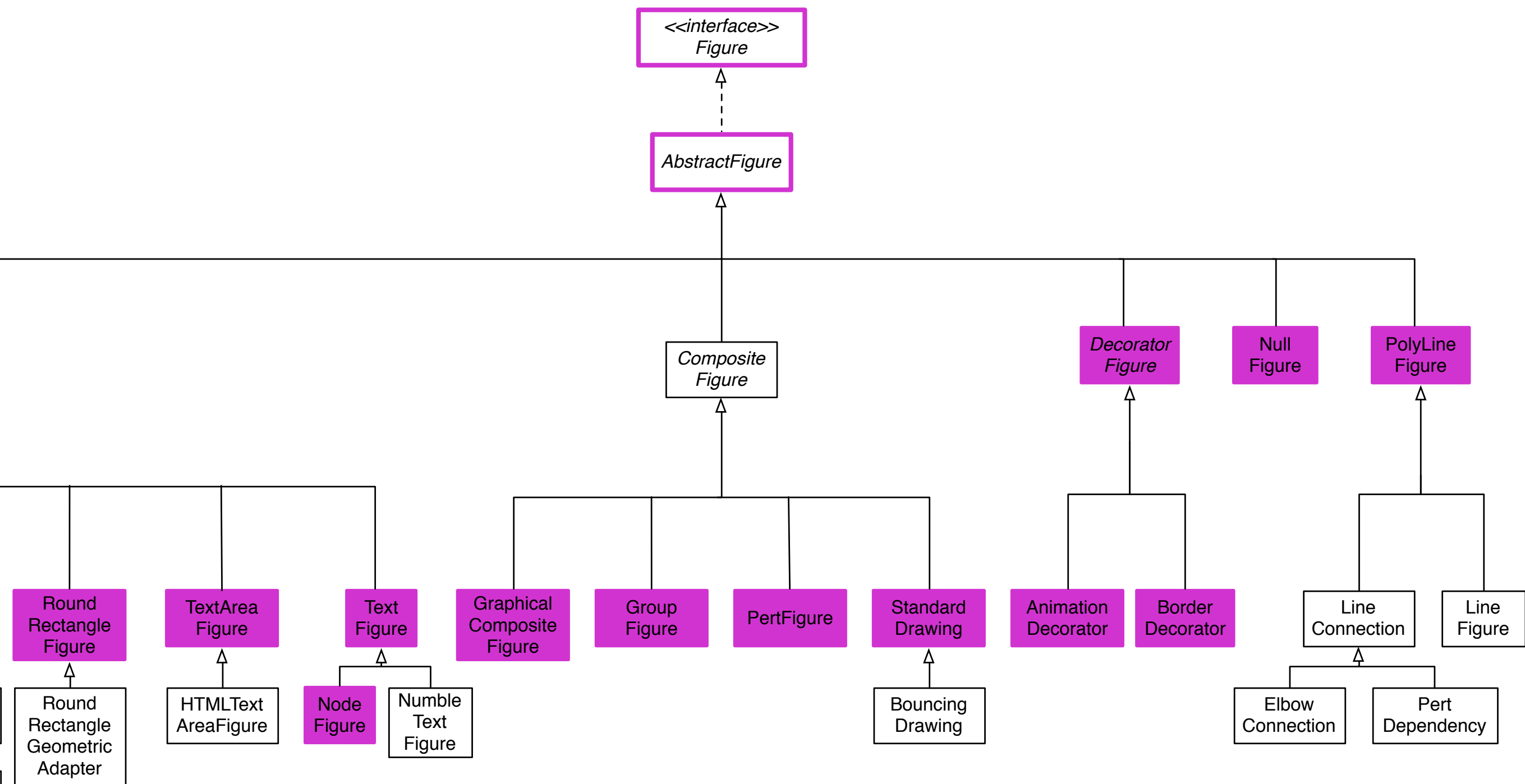
```
...
private void _addToQuadTree(Figure f) {
    if (_theQuadTree != null) {
        // Bugfix: Make sure the rectangle
        // is not zero width or height.
        Rectangle r = f.displayBox();
    }
}
...
}
```



source: JHotDraw6.0 beta 1
<http://www.jhotdraw.org/>

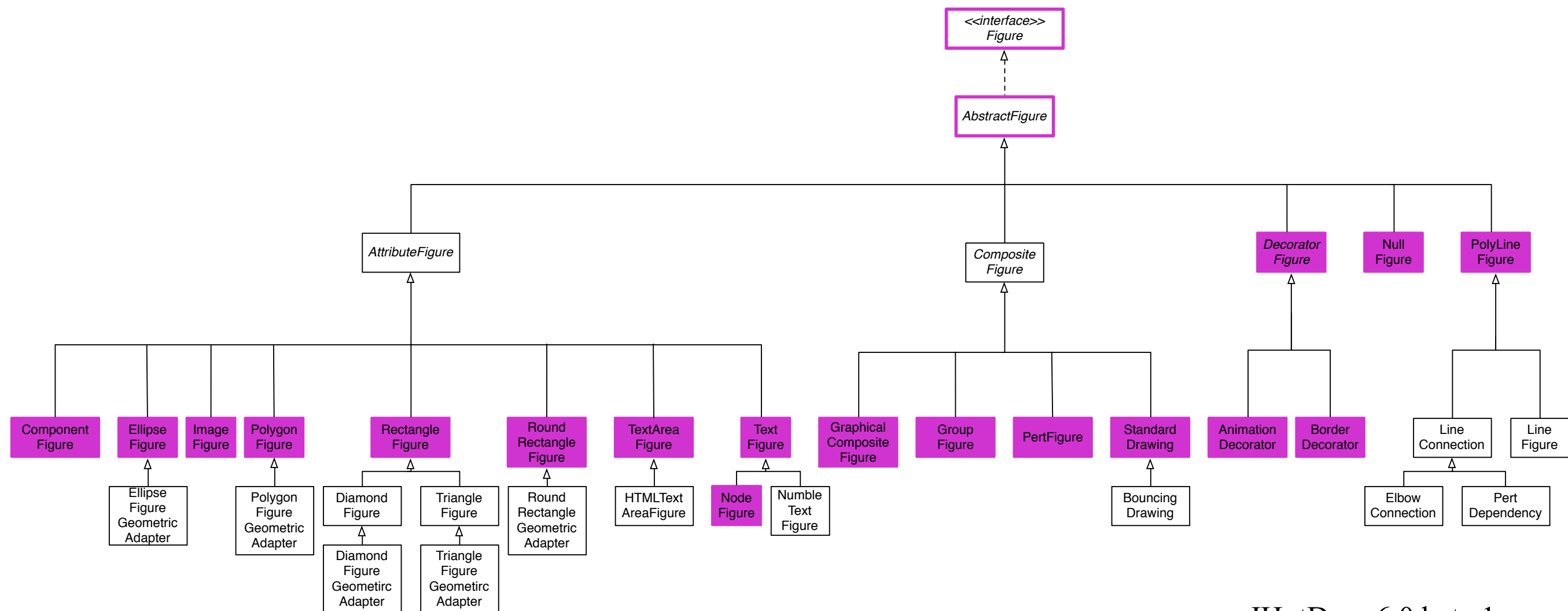


source: JHotDraw6.0 beta 1
<http://www.jhotdraw.org/>

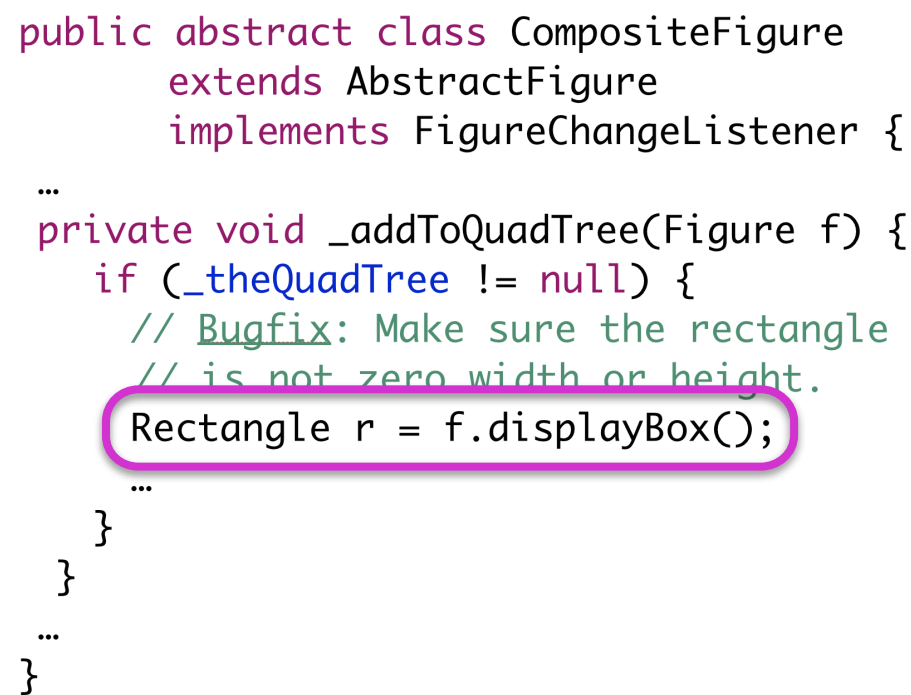


```
public abstract class CompositeFigure
    extends AbstractFigure
    implements FigureChangeListener {
```

```
...
private void _addToQuadTree(Figure f) {
    if (_theQuadTree != null) {
        // Bugfix: Make sure the rectangle
        // is not zero width or height.
        Rectangle r = f.displayBox();
    }
}
...
}
```



source: JHotDraw6.0 beta 1
<http://www.jhotdraw.org/>



=> isp(sel(cs)) = true

```

classDiagram
    class Figure {
        <<interface>>
    }
    class AbstractFigure
    class AttributeFigure
    class CompositeFigure
    class DecoratorFigure
    class NullFigure
    class PolyLineFigure
    class ComponentFigure
    class EllipseFigure
    class ImageFigure
    class PolygonFigure
    class RectangleFigure
    class RoundRectangleFigure
    class TextAreaFigure
    class TextFigure
    class GraphicalCompositeFigure
    class GroupFigure
    class PartFigure
    class StandardDrawing
    class AnimationDecorator
    class BorderDecorator
    class LineConnection
    class LineFigure
    class ElbowConnection
    class PertDependency
    class EllipseFigureGeometricAdapter
    class PolygonFigureGeometricAdapter
    class DiamondFigureGeometricAdapter
    class TriangleFigureGeometricAdapter
    class HTMLTextAreaFigure
    class NodeFigure
    class NumbleTextFigure
    class BouncingDrawing

    Figure <|.. AbstractFigure
    AbstractFigure <|-- AttributeFigure
    AbstractFigure <|-- CompositeFigure
    AbstractFigure <|-- DecoratorFigure
    AbstractFigure <|-- NullFigure
    AbstractFigure <|-- PolyLineFigure
    AttributeFigure <|-- ComponentFigure
    AttributeFigure <|-- EllipseFigure
    AttributeFigure <|-- ImageFigure
    AttributeFigure <|-- PolygonFigure
    AttributeFigure <|-- RectangleFigure
    AttributeFigure <|-- RoundRectangleFigure
    AttributeFigure <|-- TextAreaFigure
    AttributeFigure <|-- TextFigure
    CompositeFigure <|-- GraphicalCompositeFigure
    CompositeFigure <|-- GroupFigure
    CompositeFigure <|-- PartFigure
    CompositeFigure <|-- StandardDrawing
    DecoratorFigure <|-- AnimationDecorator
    DecoratorFigure <|-- BorderDecorator
    PolyLineFigure <|-- LineConnection
    PolyLineFigure <|-- LineFigure
    LineConnection <|-- ElbowConnection
    LineConnection <|-- PertDependency
    EllipseFigure <|.. EllipseFigureGeometricAdapter
    PolygonFigure <|.. PolygonFigureGeometricAdapter
    RectangleFigure <|.. DiamondFigureGeometricAdapter
    RectangleFigure <|.. TriangleFigureGeometricAdapter
    TextFigure <|.. NodeFigure
    TextFigure <|.. NumbleTextFigure
    StandardDrawing <|.. BouncingDrawing
    
```

8



```
RBMessageNode>>receiver: aValueNode  
receiver := aValueNode.  
receiver parent: self
```

Implementors of parent: [28]		
ASElement (accessing)	parent:	[Athens-SVG]
BlxState (accessing)	parent:	[BlocX-Core]
DynamixEvent (accessing)	parent:	[Dynamix-Core]
FileListGrid (accessing)	parent:	[Tools]
GLMMorphicSingleSpotter (accessing)	parent:	[Glamour-Morphic-Renderer]
GTMetacellerItemDifference (accessing)	parent:	[GT-Metaceller-Model]
Job (private)	parent:	[Kernel]
MalDisjointSetNode (private-accessing)	parent:	[Moose-Algos-Graph]
MalHgNode (accessing)	parent:	[Moose-Algos-HierarchicalGraph]
MalHgTestModelSimple (accessing)	parent:	[Moose-Tests-Algos-HierarchicalGraph]
MenuRegistration (accessing)	parent:	[MenuRegistration]
MetacelloVersionMethodSection (accessing)	parent:	[Metacello-Core]
MorphTreeNodeMorph (accessing)	parent:	[Morphic-Base]
MTDependency (accessing)	parent:	[Versionner-Core-DependenciesModel]
ObjectExplorerWrapper (accessing)	parent:	[Tools]
PPParserDebuggerResult (accessing)	parent:	[PetitGui]
PragmaMenuAndShortcutRegistration (menu protocol)	parent:	[MenuRegistration]
PragmaMenuAndShortcutRegistrationItem (menu protocol)	parent:	[MenuRegistration]
RBProgramNode (accessing)	parent:	[AST-Core]
RBPatterVariableNode (accessing)	parent:	[AST-Core]
RGElementDefinition (generic parent api)	parent:	[Ring-Core-Kernel]
RTExploraTestTree (accessing)	parent:	[Roassal2]
SettingNode (accessing)	parent:	[System-Settings]
SettingNodeBuilder (public declaration accessing)	parent:	[System-Settings]
SmalltalkScope (accessing)	parent:	[Moose-SmalltalkImporter]
XMLNode (accessing)	parent:	[XML-Parser]
XMLAttribute (accessing)	parent:	[XML-Parser]
ZipEncoderNode (accessing)	parent:	[Compression]

source: AST-Core

<http://smalltalkhub.com/mc/Pharo/Pharo30/main>



RBMessageNode>>receiver: aValueNode
receiver := aValueNode.
receiver parent: self

Implementors of parent: [28]		
ASElement (accessing)	parent:	[Athens-SVG]
BlxState (accessing)	parent:	[BlocX-Core]
DynamixEvent (accessing)	parent:	[Dynamix-Core]
FileListGrid (accessing)	parent:	[Tools]
GLMMorphicSingleSpotter (accessing)	parent:	[Glamour-Morphic-Renderer]
GTMetacellerItemDifference (accessing)	parent:	[GT-Metaceller-Model]
Job (private)	parent:	[Kernel]
MalDisjointSetNode (private-accessing)	parent:	[Moose-Algos-Graph]
MalHgNode (accessing)	parent:	[Moose-Algos-HierarchicalGraph]
MalHgTestModelSimple (accessing)	parent:	[Moose-Tests-Algos-HierarchicalGraph]
MenuRegistration (accessing)	parent:	[MenuRegistration]
MetacelloVersionMethodSection (accessing)	parent:	[Metacello-Core]
MorphTreeNodeMorph (accessing)	parent:	[Morphic-Base]
MTDependency (accessing)	parent:	[Versionner-Core-DependenciesModel]
ObjectExplorerWrapper (accessing)	parent:	[Tools]
PPParserDebuggerResult (accessing)	parent:	[PetitGui]
PragmaMenuAndShortcutRegistration (menu protocol)	parent:	[MenuRegistration]
PragmaMenuAndShortcutRegistrationItem (menu protocol)	parent:	[MenuRegistration]
RBProgramNode (accessing)	parent:	[AST-Core]
RBPatterVariableNode (accessing)	parent:	[AST-Core]
RGElementDefinition (generic parent api)	parent:	[Ring-Core-Kernel]
RTEExploraTestTree (accessing)	parent:	[Roassal2]
SettingNode (accessing)	parent:	[System-Settings]
SettingNodeBuilder (public declaration accessing)	parent:	[System-Settings]
SmalltalkScope (accessing)	parent:	[Moose-SmalltalkImporter]
XMLNode (accessing)	parent:	[XML-Parser]
XMLAttribute (accessing)	parent:	[XML-Parser]
ZipEncoderNode (accessing)	parent:	[Compression]

source: AST-Core

<http://smalltalkhub.com/mc/Pharo/Pharo30/main>



```
RBMessageNode>>receiver: aValueNode  
receiver := aValueNode.  
receiver parent: self
```

```
cs = receiver parent: self  
sel(cs) = parent:  
rec(cs) = ?  
cardinality(cs) = 28
```

=> isp(cs) = true

=> isp(sel(cs)) = true

```
def(cs) = RBMessageNode>>receiver:
```

Implementors of parent: [28]	
ASElement (accessing)	parent: [Athens-SVG]
BlxState (accessing)	parent: [Block-Core]
DynamixEvent (accessing)	parent: [Dynamix-Core]
FileListGrid (accessing)	parent: [Tools]
GLMMorphicSingleSpotter (accessing)	parent: [Glamour-Morphic-Renderer]
GTMetacellerItemDifference (accessing)	parent: [GT-Metaceller-Model]
Job (private)	parent: [Kernel]
MalDisjointSetNode (private-accessing)	parent: [Moose-Algos-Graph]
MalHgNode (accessing)	parent: [Moose-Algos-HierarchicalGraph]
MalHgTestModelSimple (accessing)	parent: [Moose-Tests-Algos-HierarchicalGraph]
MenuRegistration (accessing)	parent: [MenuRegistration]
MetacelloVersionMethodSection (accessing)	parent: [Metacello-Core]
MorphTreeNodeMorph (accessing)	parent: [Morphic-Base]
MTDependency (accessing)	parent: [Versionner-Core-DependenciesModel]
ObjectExplorerWrapper (accessing)	parent: [Tools]
PPParserDebuggerResult (accessing)	parent: [PetitGui]
PragmaMenuAndShortcutRegistration (menu protocol)	parent: [MenuRegistration]
PragmaMenuAndShortcutRegistrationItem (menu protocol)	parent: [MenuRegistration]
RBProgramNode (accessing)	parent: [AST-Core]
RBPatternVariableNode (accessing)	parent: [AST-Core]
RGElementDefinition (generic parent api)	parent: [Ring-Core-Kernel]
RTExploraTestTree (accessing)	parent: [Roassal2]
SettingNode (accessing)	parent: [System-Settings]
SettingNodeBuilder (public declaration accessing)	parent: [System-Settings]
SmalltalkScope (accessing)	parent: [Moose-SmalltalkImporter]
XMLNode (accessing)	parent: [XML-Parser]
XMLAttribute (accessing)	parent: [XML-Parser]
ZipEncoderNode (accessing)	parent: [Compression]

source: AST-Core

<http://smalltalkhub.com/mc/Pharo/Pharo30/main>



130 000 classes
1 086 000 methods



125 000 classes
1 637 000 methods



130 000 classes
1 086 000 methods



125 000 classes
1 637 000 methods



**% of methods
defining
polymorphic
selectors**

24%

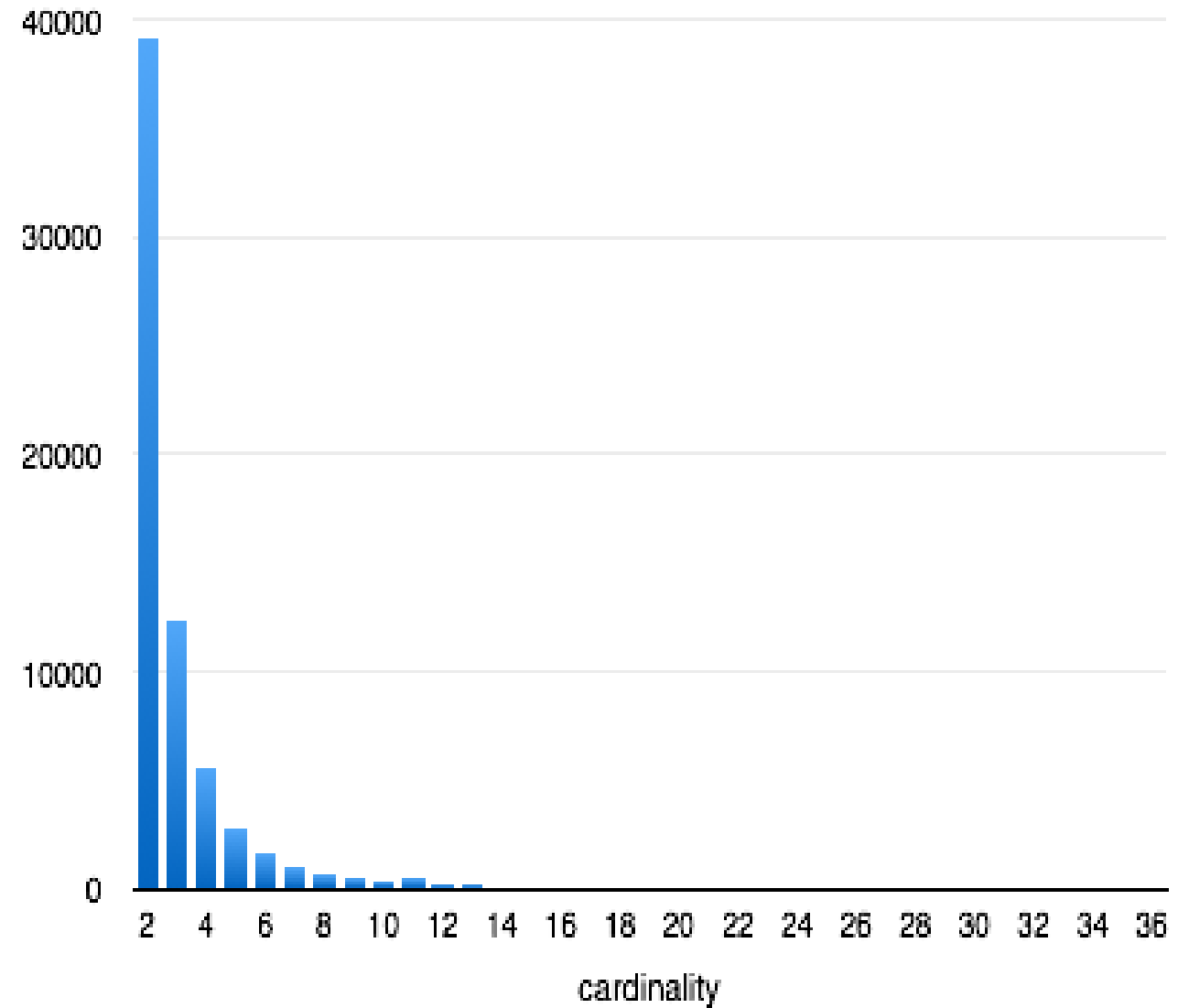
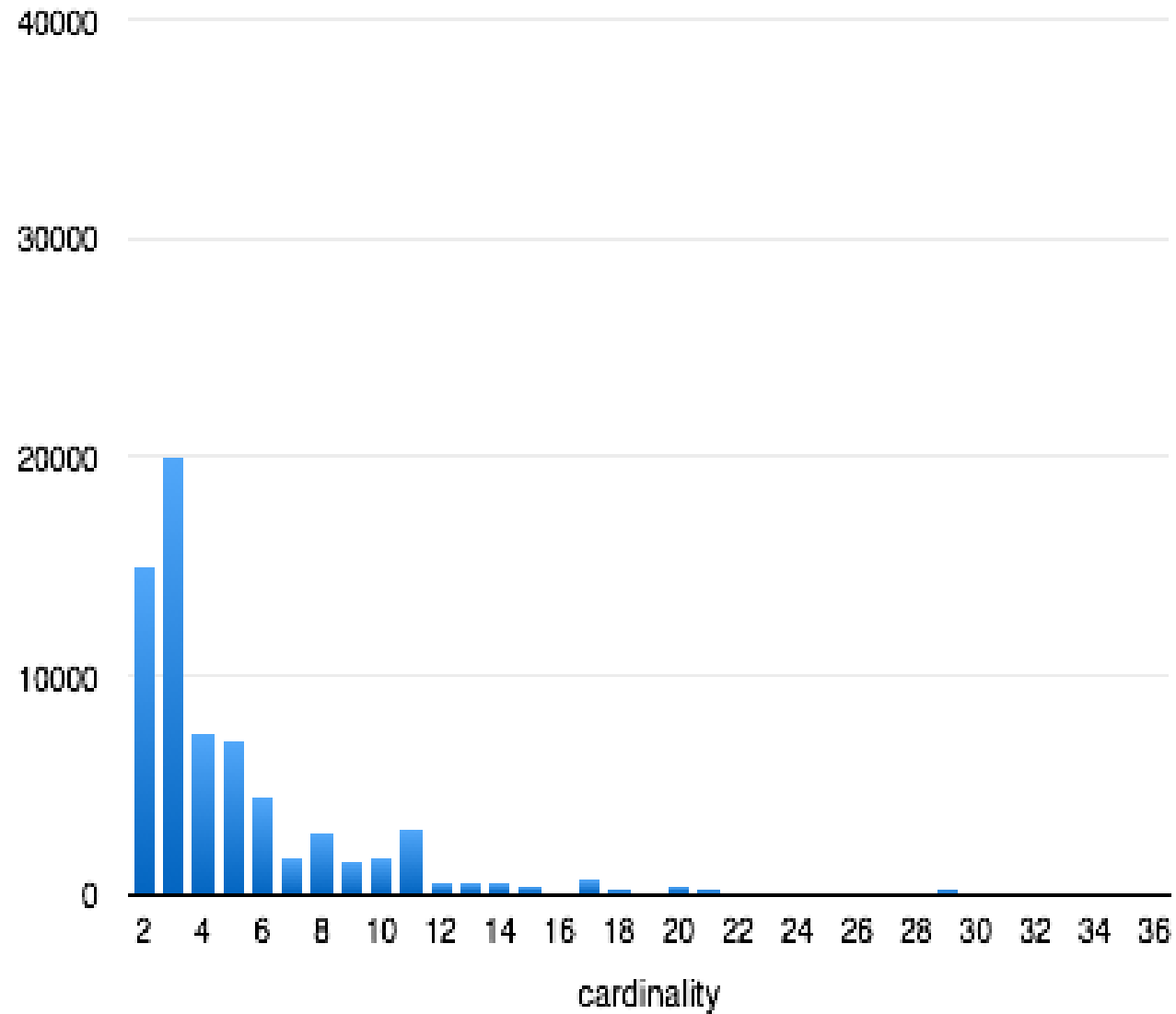
31%

**% of
polymorphic
call sites**

16%

24%

Cardinality of the Polymorphic Call Sites

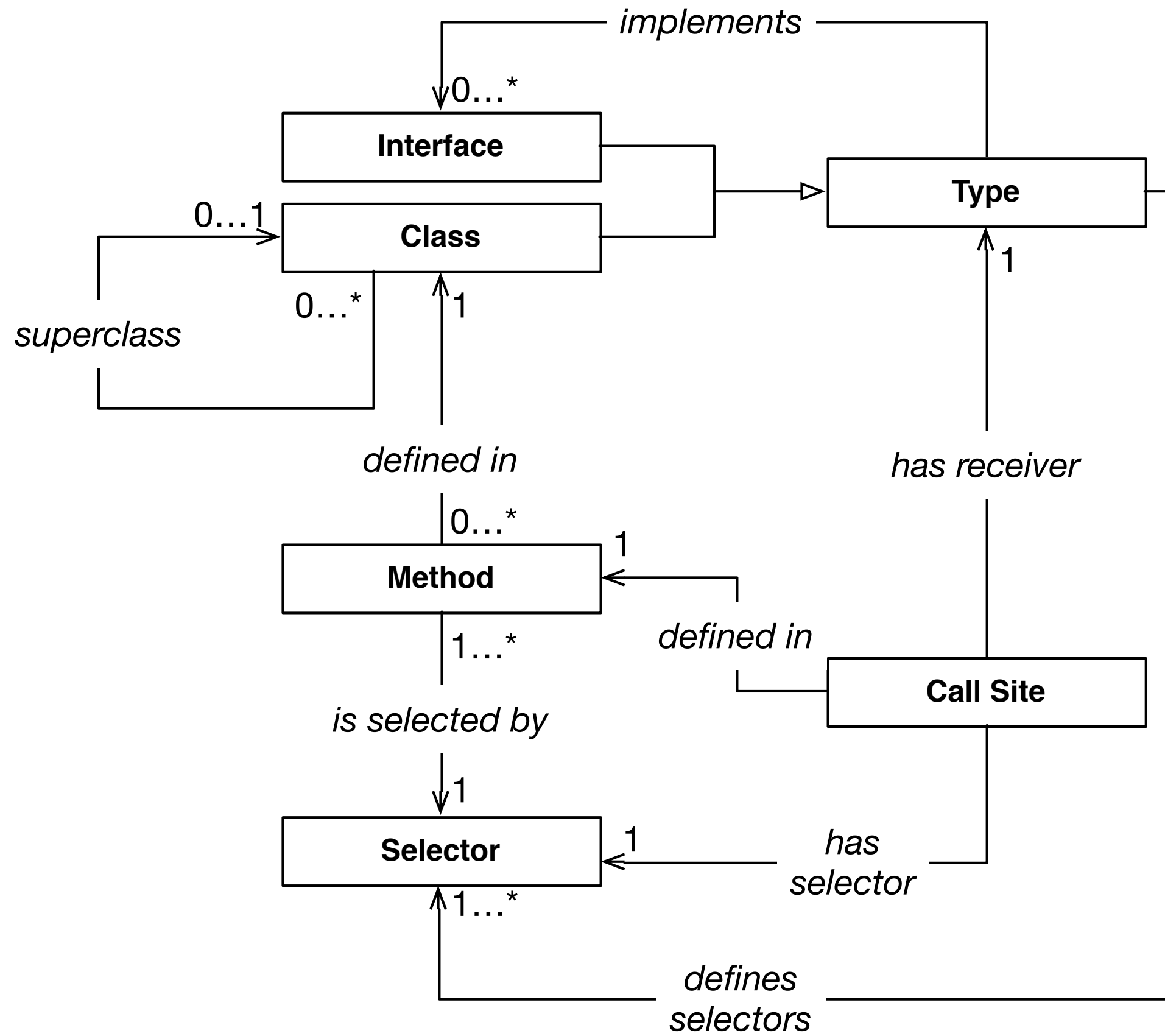


Overview

```
cs = f.displayBox()  
sel(cs) = displayBox()  
rec(cs) = Figure  
cardinality (cs) = 18
```



Defining Polymorphic Selectors	24%	31%
Proportion of Polymorphic Call Sites	16%	24%
cardinality	90% < 12	90% < 6



$$subh(t) = \begin{cases} (sup^{-1})^*(t) \cup t, \text{ if } t \in C \\ \{(sup^{-1})^*(t'), t' \in t^* \cap C\} \cup t^* \\ \text{where } t^* = t \cup (impl^{-1})^*(t), \text{ if } t \in I \end{cases} \quad (11)$$

$$impl(t, s) = \{m \in M \mid msg(m) = s \wedge def_m(m) \in subh(t)\} \quad (12)$$

Smalltalk:

$$undr(c, s) = s \in sel_t(c) \vee undr(sup(c), s) \quad (13)$$

$$intr(s) = \{c \in C \mid undr(c, s) \wedge \neg undr(sup(c), s)\} \quad (14)$$

$$isp(cs) = (\exists c \in intr(sel(cs))) s.t. (|impl(c, sel(cs))| > 1) \quad (15)$$

$$isp(s) = (\exists c \in intr(s)) s.t. (|impl(c, s)| > 1) \quad (16)$$

Java:

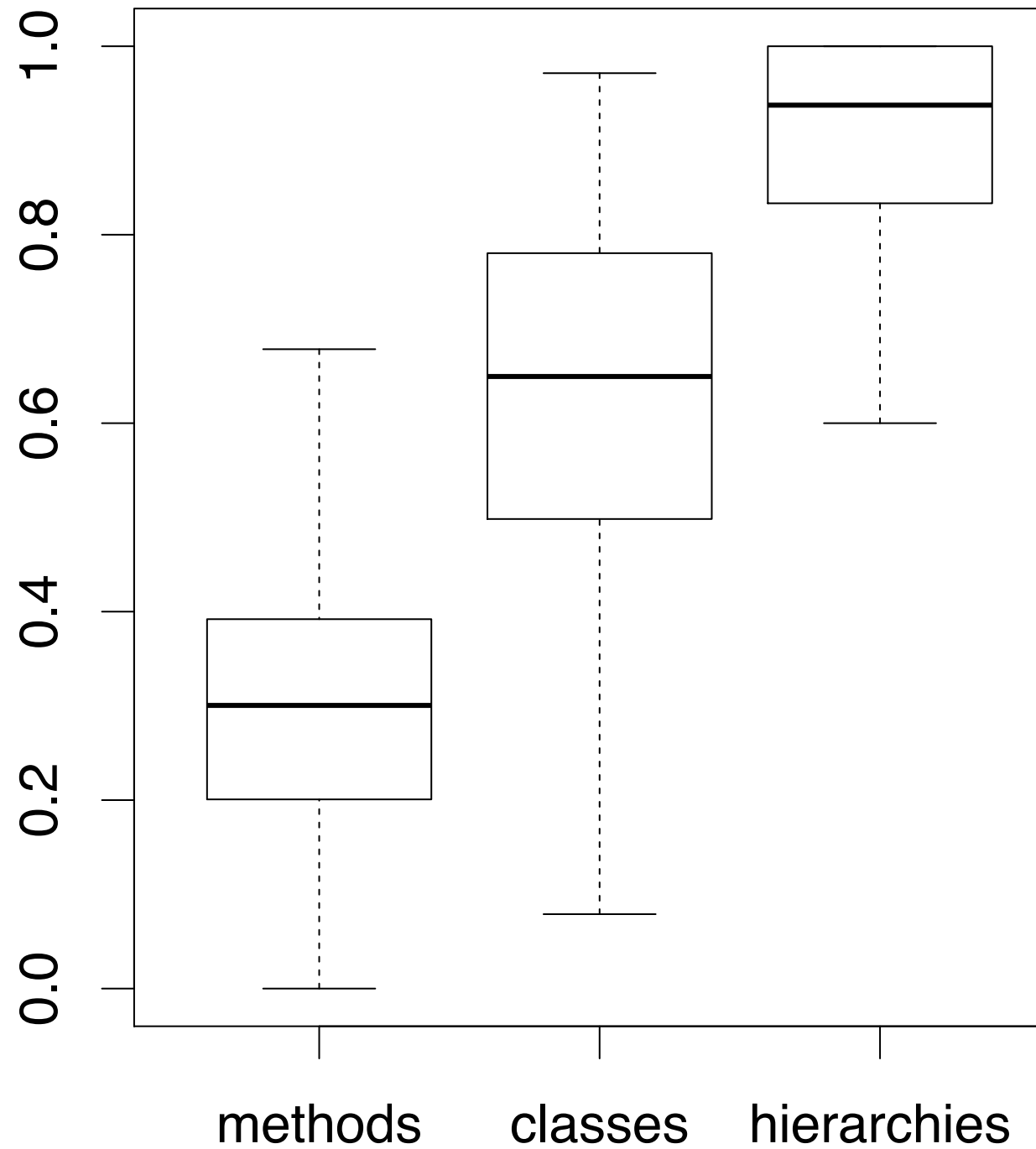
$$isp_t(cs) = |impl(t, sel(cs))| > 1 \quad (17)$$

$$isp_t(s) = (\exists t \in T) s.t. (|impl(t, s)| > 1) \quad (18)$$

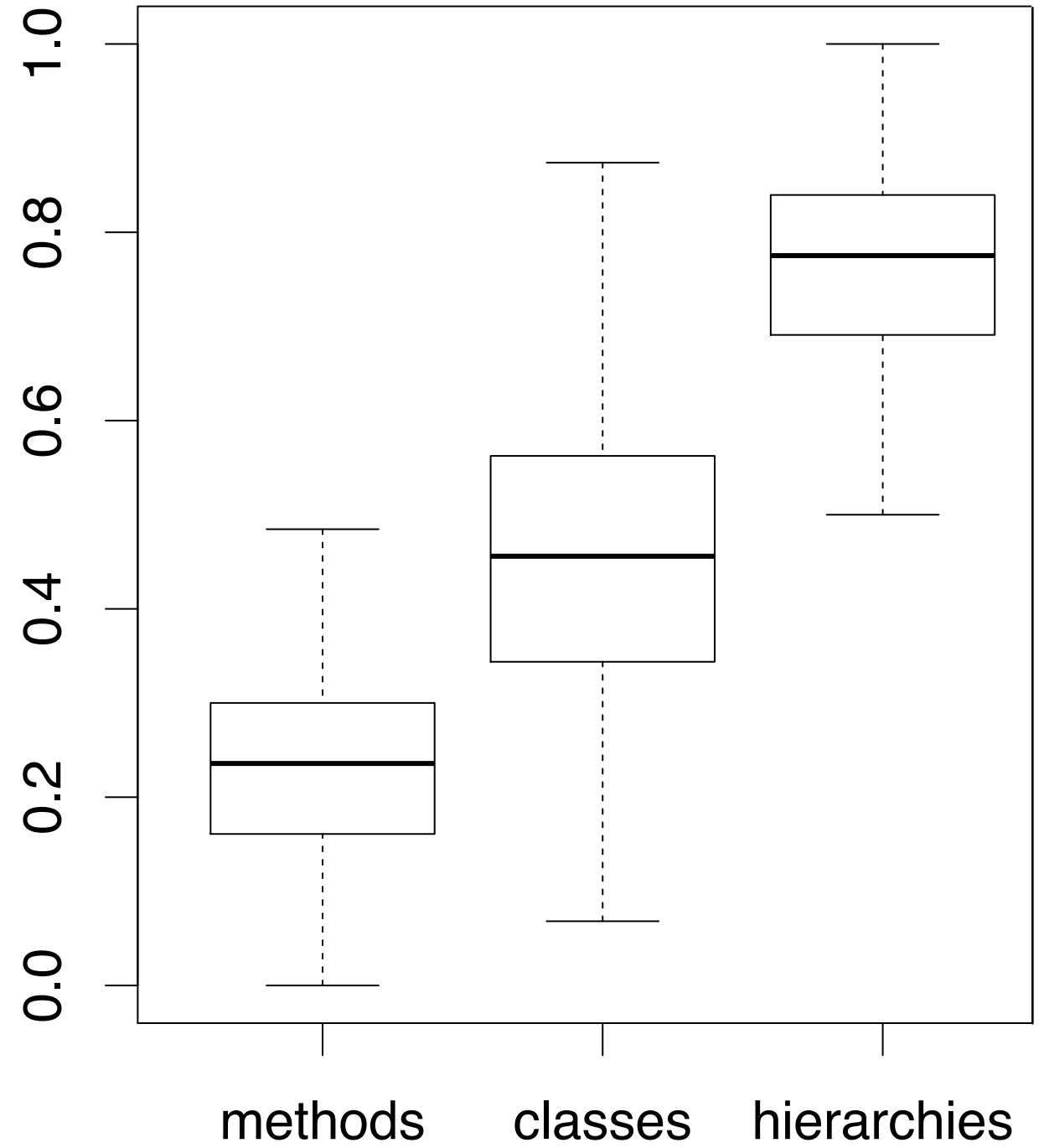
Fig. 5: Computing polymorphic metrics

Defining Polymorphic Selectors

(a) Smalltalk

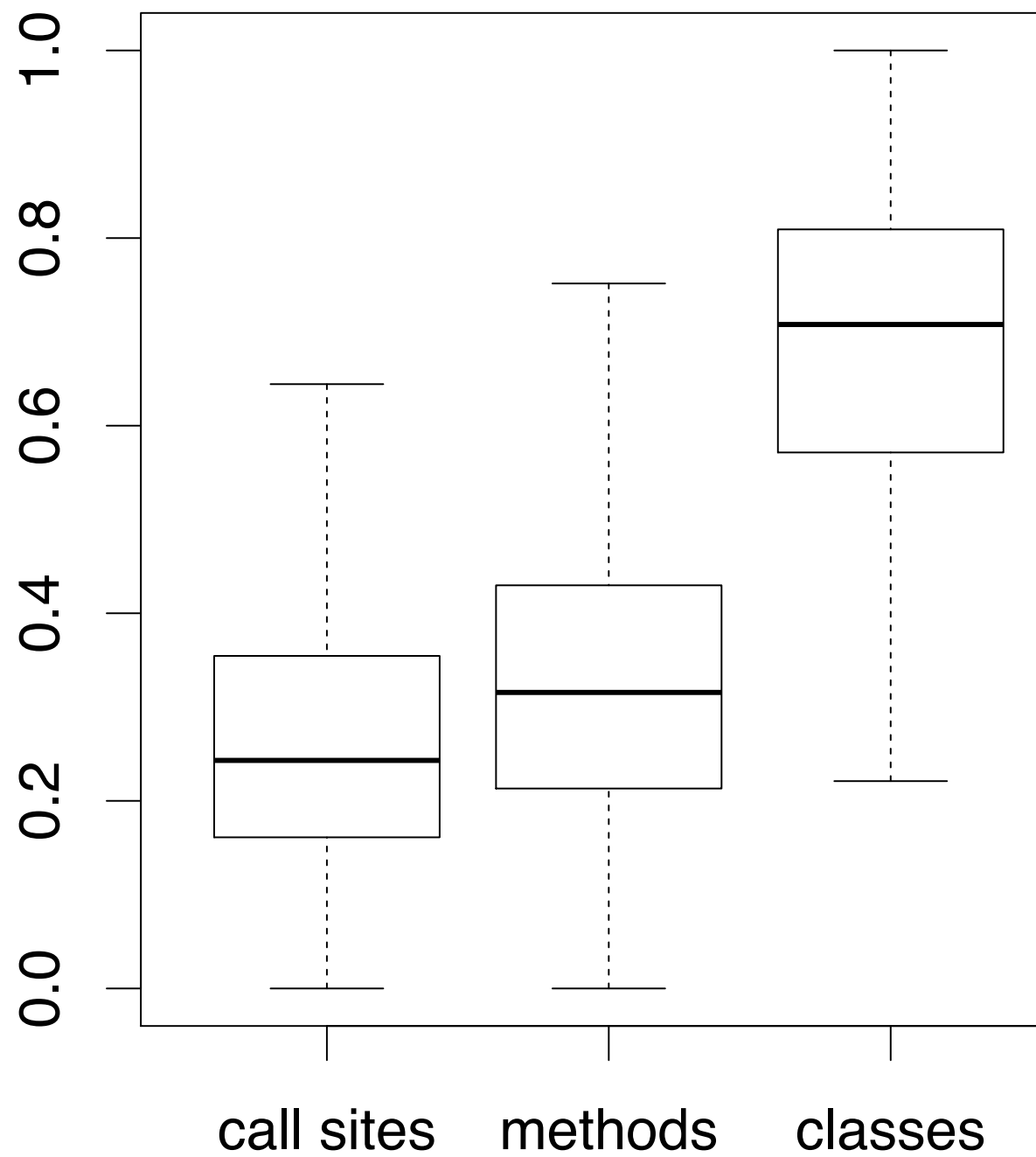


(b) Java



Proportion of Polymorphic Call Sites

(a) Smalltalk



(b) Java

